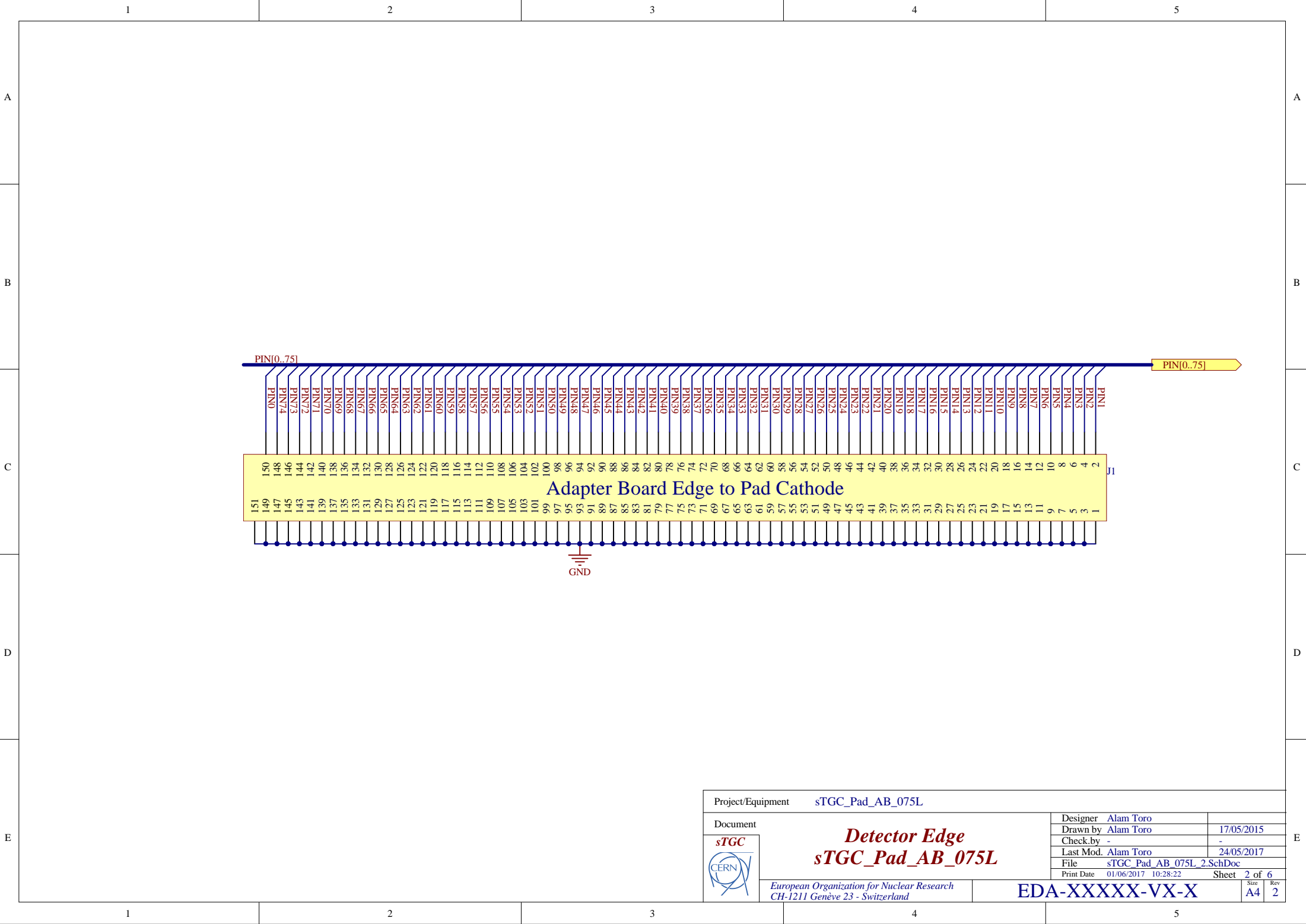
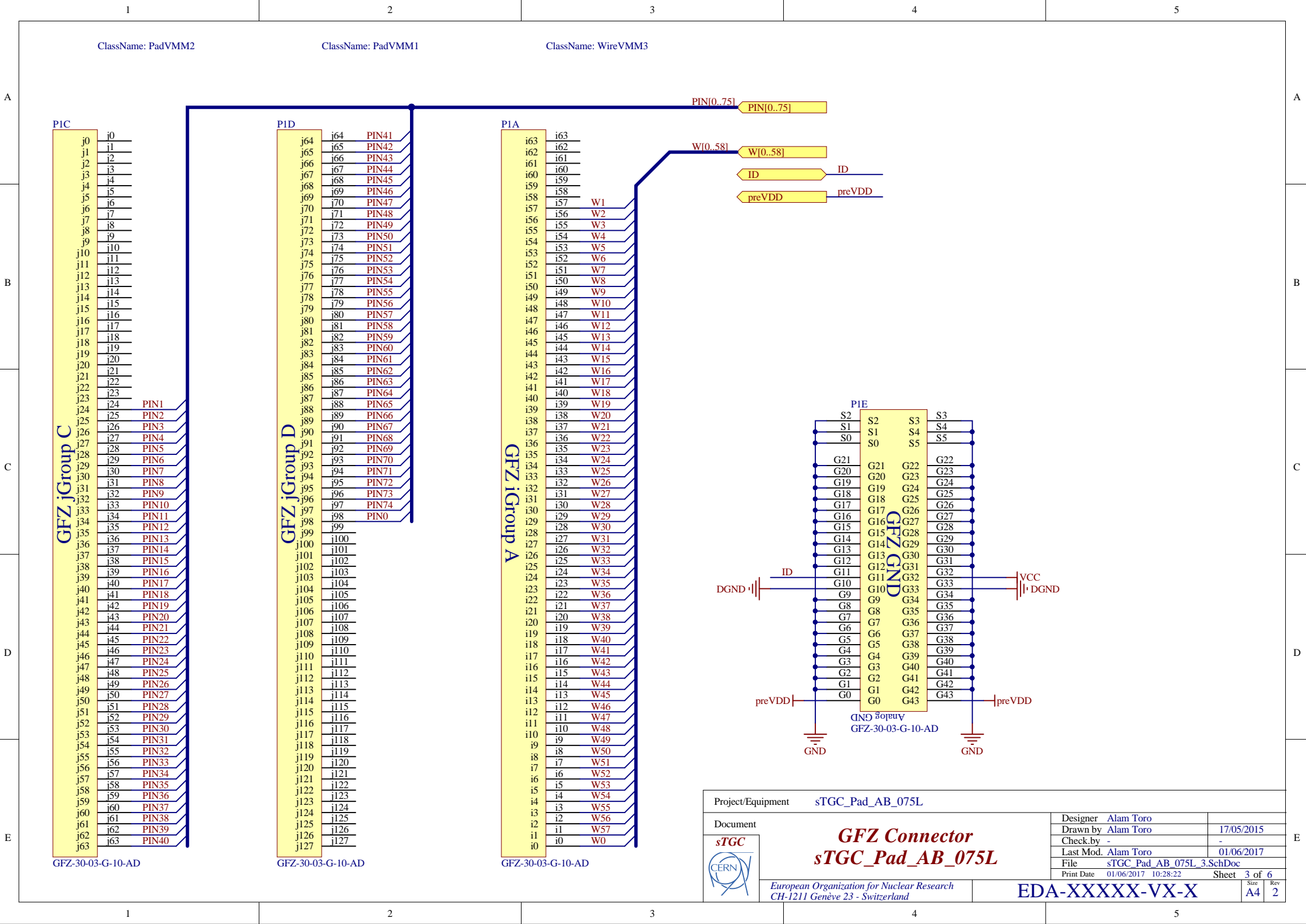


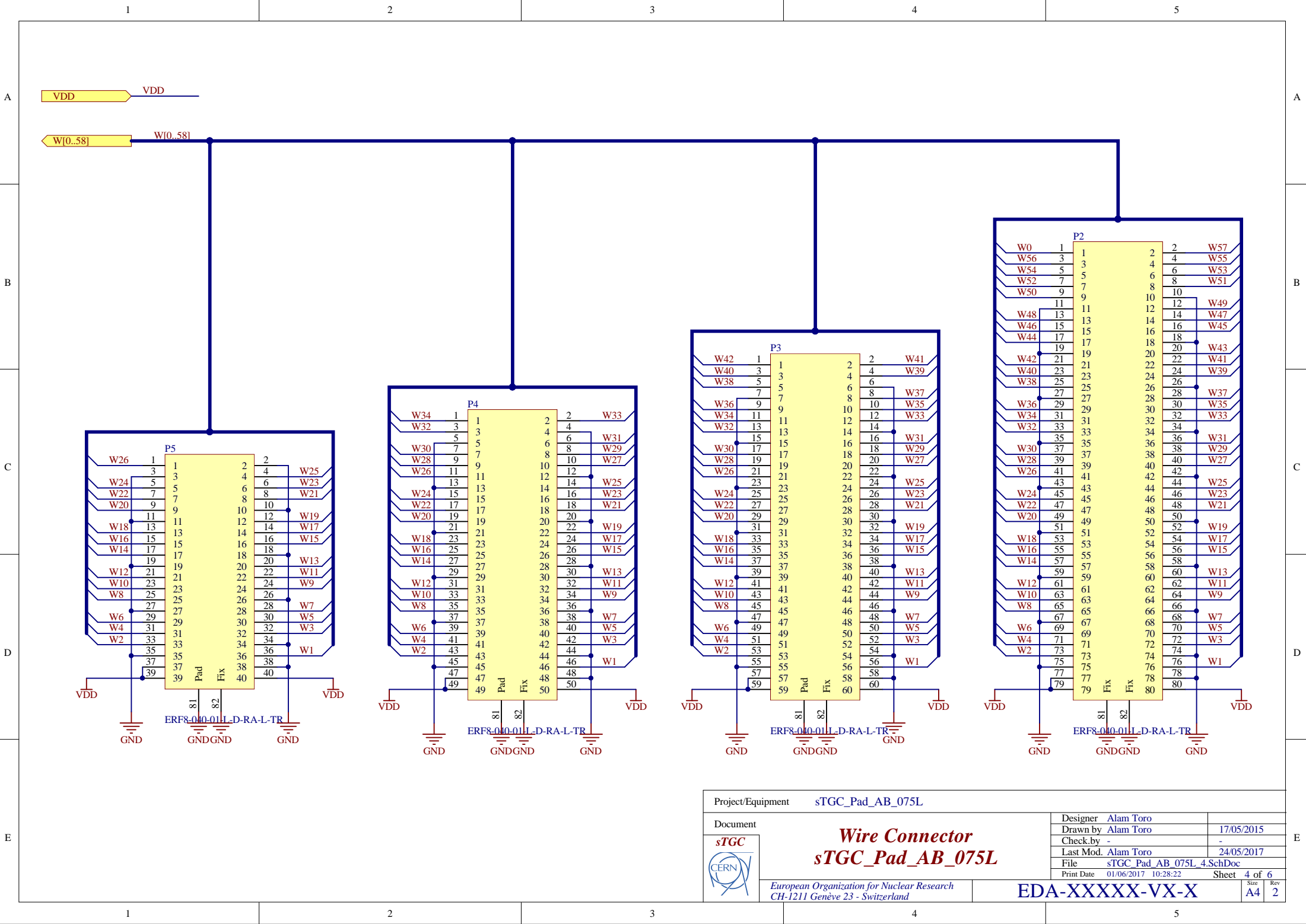
2.0	Screw holes grounded	01/06/2017
1.0	Release for Production	05/12/2016
Rev	Description	Date
Project/Equipment sTGC_Pad_AB_075L		
Document		Designer Alam Toro
<div><div><div>sTGC</div><div>CERN</div></div><div><div>Main</div><div>sTGC_Pad_AB_075L</div></div><div>European Organization for Nuclear Research CH-1211 Genève 23 - Switzerland</div></div>		Drawn by Alam Toro
		17/05/2015
		Check.by -
		-
		Last Mod. Alam Toro
24/05/2017		
File sTGC_Pad_AB_075L_1.SchDoc	Sheet 1 of 6	
Print Date 01/06/2017 10:28:22	Size A4	Rev 2



Project/Equipment		sTGC_Pad_AB_075L	
<div><div>sTGC</div><div>CERN</div></div>	Document		
	<div>Detector Edge</div> <div>sTGC_Pad_AB_075L</div>		
	Designer	Alam Toro	
	Drawn by	Alam Toro	17/05/2015
	Check by	-	-
	Last Mod.	Alam Toro	24/05/2017
	File	sTGC_Pad_AB_075L_2.SchDoc	
	Print Date	01/06/2017 10:28:22	Sheet 2 of 6
European Organization for Nuclear Research CH-1211 Genève 23 - Switzerland		EDA-XXXXX-VX-X	<div>Size A4</div> <div>Rev 2</div>



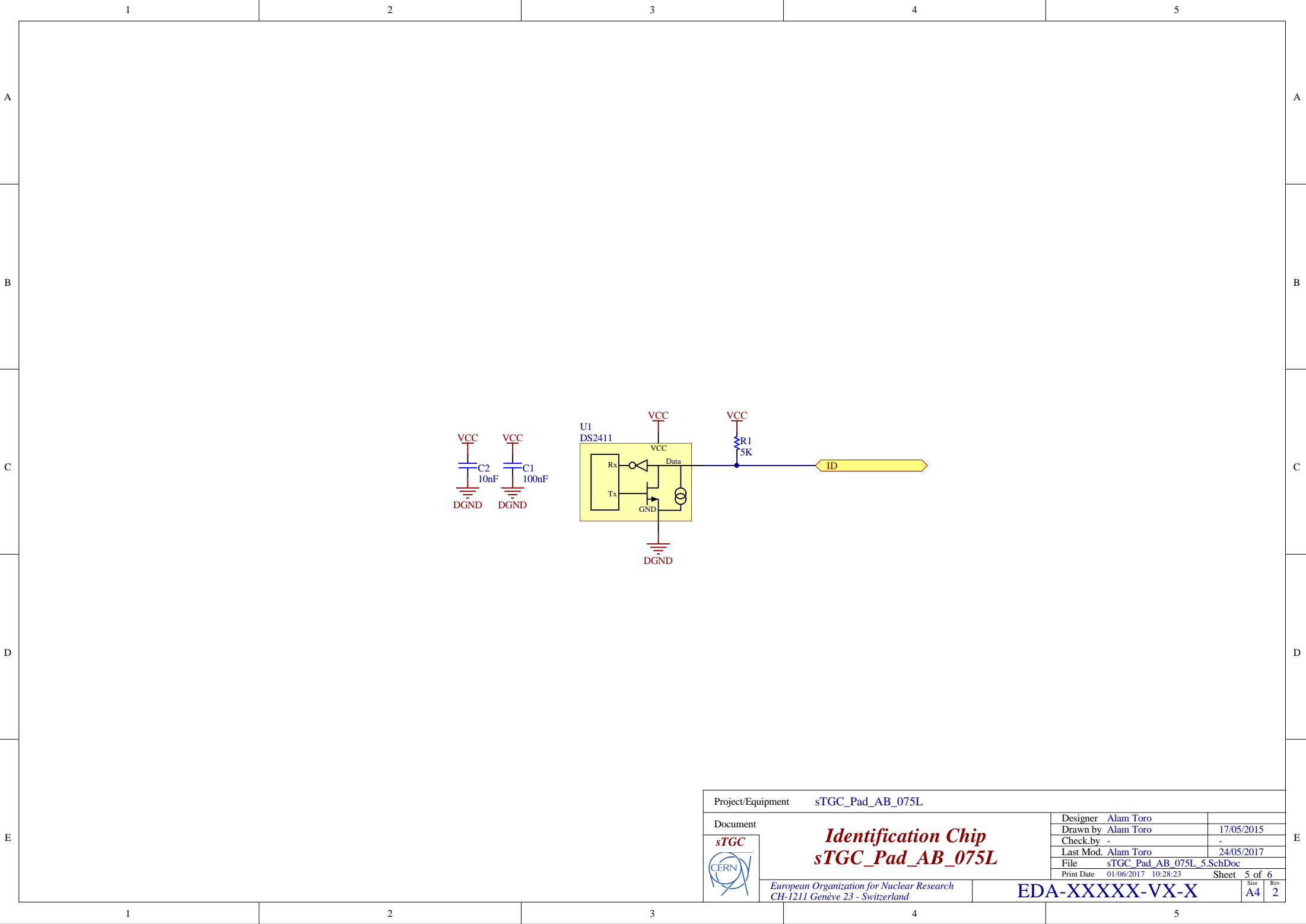
Project/Equipment		sTGC_Pad_AB_075L	
<div><div>sTGC</div><div>CERN</div></div>	Document		
	GFZ Connector		
	sTGC_Pad_AB_075L		
	European Organization for Nuclear Research		
	CH-1211 Genève 23 - Switzerland		
Designer		Alam Toro	17/05/2015
Drawn by		Alam Toro	17/05/2015
Check by		-	-
Last Mod.		Alam Toro	01/06/2017
File		sTGC_Pad_AB_075L_3.SchDoc	
Print Date		01/06/2017 10:28:22	
Sheet		3 of 6	
Size		A4	
Rev		2	



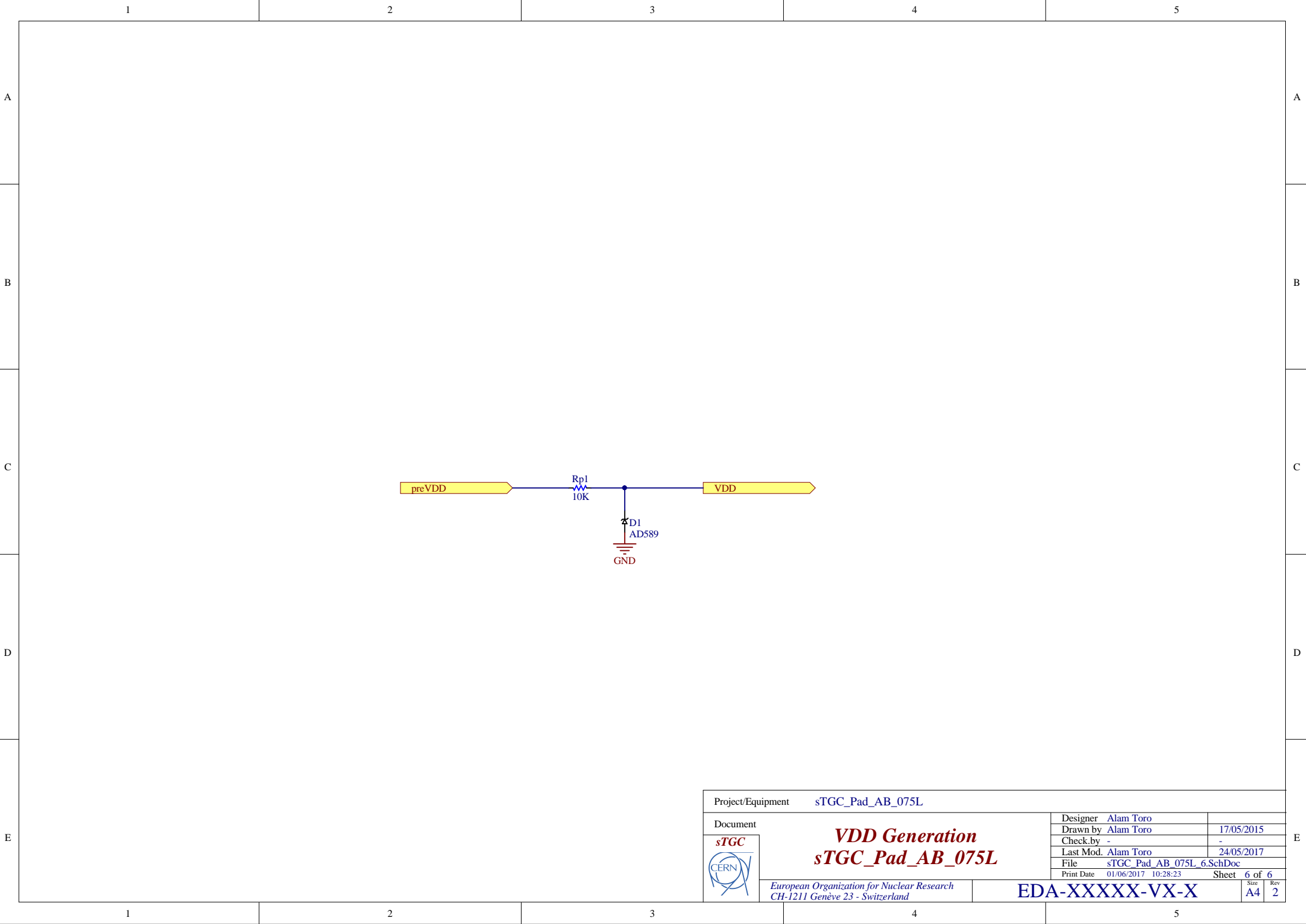
Project/Equipment		sTGC_Pad_AB_075L	
Document		Designer Alam Toro	
<div><div>sTGC</div><div>CERN</div><div>European Organization for Nuclear Research CH-1211 Genève 23 - Switzerland</div></div>		Drawn by	Alam Toro
		Check by	-
		Last Mod.	Alam Toro
		File	sTGC_Pad_AB_075L_4.SchDoc
		Print Date	01/06/2017 10:28:22
		Sheet 4 of 6	
		Size	A4
		Rev	2

Wire Connector
sTGC_Pad_AB_075L

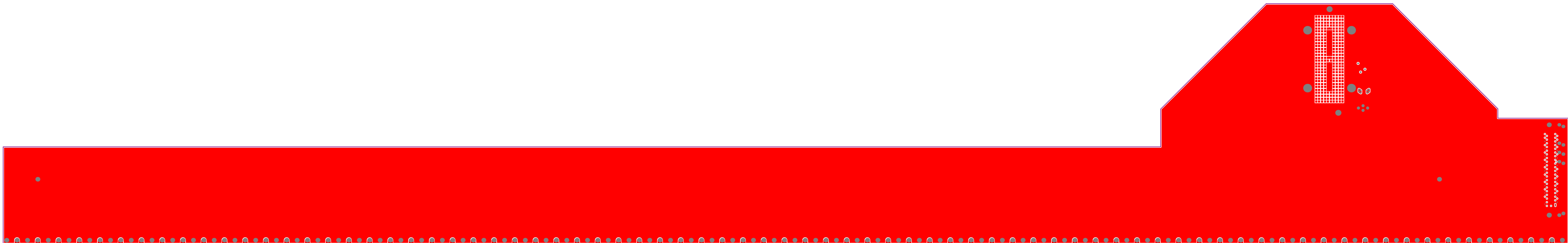
EDA-XXXXX-VX-X

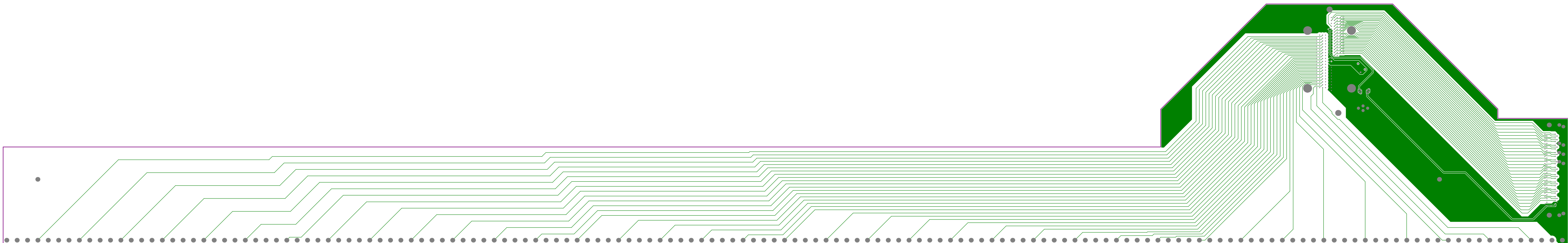


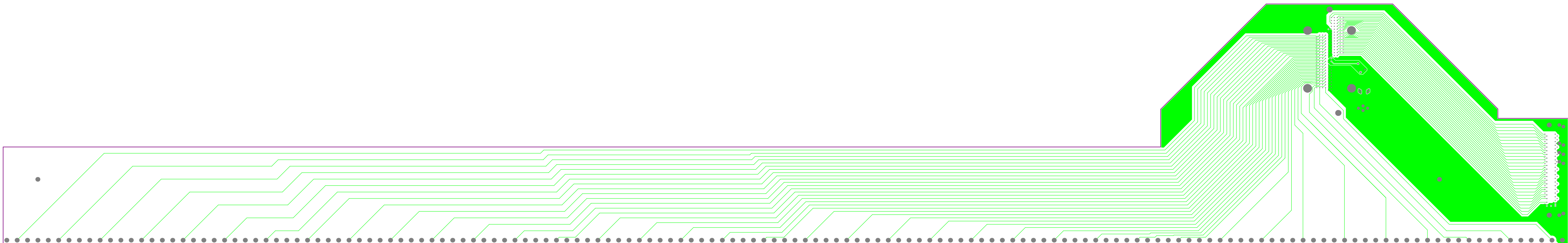
Project/Equipment			sTGC_Pad_AB_075L		
<div><div>sTGC</div><div>CERN</div></div> <div><div>Identification Chip</div><div>sTGC_Pad_AB_075L</div></div> <div>European Organization for Nuclear Research</div> <div>CH-1211 Genève 23 - Switzerland</div>			Designer	Alam Toro	
			Drawn by	Alam Toro	17/05/2015
			Check.by	-	-
			Last Mod.	Alam Toro	24/05/2017
			File	sTGC_Pad_AB_075L_5.SchDoc	
Print Date			01/06/2017 10:28:23		Sheet 5 of 6
			EDA-XXXXXX-VX-X		Size A4 Rev 2

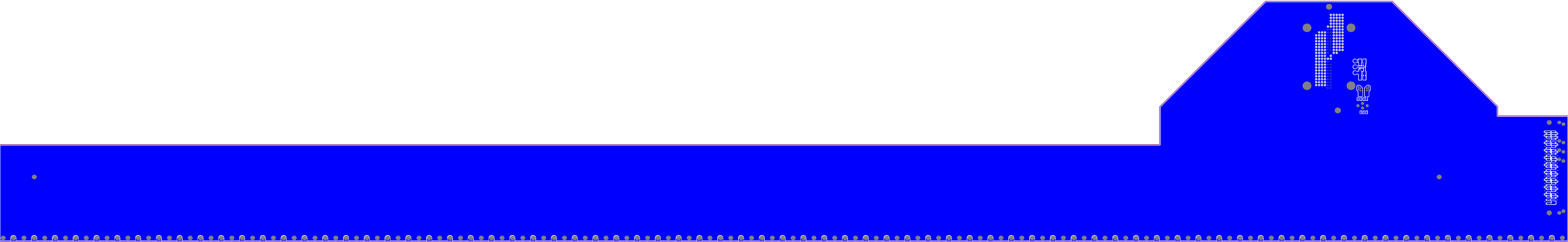


Project/Equipment			sTGC_Pad_AB_075L		
<div><div>sTGC</div><div>CERN</div></div> <div>VDD Generation sTGC_Pad_AB_075L</div> <div>European Organization for Nuclear Research CH-1211 Genève 23 - Switzerland</div>			Designer	Alam Toro	
			Drawn by	Alam Toro	17/05/2015
			Check.by	-	-
			Last Mod.	Alam Toro	24/05/2017
			File	sTGC_Pad_AB_075L_6.SchDoc	
			Print Date	01/06/2017 10:28:23	Sheet 6 of 6
EDA-XXXXXX-VX-X				Size A4	Rev 2























Symbol	Hit Count	Finished Hole Size	Plated	Hole Type	Physical Length
⌘	2	1.651mm <65.00mil>	PTH	Round	-
✱	2	2.000mm <78.74mil>	NPTH	Slot	6.437mm <253.43mil>
E	4	1.000mm <39.37mil>	PTH	Round	-
✱	4	2.000mm <78.74mil>	PTH	Round	-
▣	5	1.905mm <75.00mil>	PTH	Round	-
▼	8	0.635mm <25.00mil>	PTH	Round	-
⌘	8	1.448mm <57.00mil>	PTH	Round	-
D	11	0.400mm <15.75mil>	PTH	Round	-
G	80	0.256mm <10.08mil>	PTH	Round	-
B	151	1.350mm <53.15mil>	PTH	Round	-
F	174	0.254mm <10.00mil>	PTH	Round	-
	449 Total				

Slot definitions : Routed Path Length = Calculated from tool start centre position to tool end centre position.
Physical Length = Routed Path Length + Tool Size = Slot length as defined in the PCB layout

